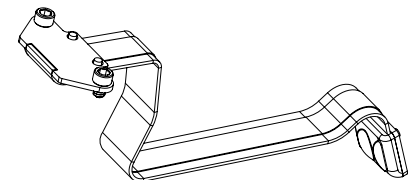


SUREFIRE®

XVL2 XVL2-IRC REMOTE SWITCH FOR PISTOLS

RSP-01: GLOCK FULL SIZE AND COMPACT GEN 3 AND UP
RSP-02: HECKLER & KOCH P30 & VP9 SERIES
RSP-03: SIG SAUER P320/M17 FRAME
RSP-04: SIG SAUER P320 X-CARRY



WARRANTY

We'll do what it takes to keep your SureFire gear running smoothly. SureFire warrants that if you — our customer — purchase one of our products, and we determine that it is defective in material and/or workmanship during your lifetime, we will repair or replace it — no hassle!

Our warranty does not cover consumables or normal wear-and-tear — things like batteries draining, headbands and headpads wearing out, ink cartridges running out, and switches wearing out — or damage resulting from abuse, alterations, unauthorized repairs, or use contrary to SureFire's user manuals.

Should you need a replacement product, SureFire reserves the right to replace an obsolete product with a current production, like model. In the event that any issue with a SureFire product is not covered under this warranty SureFire can arrange to have the product repaired for a reasonable fee.

STANDARD DISCLAIMER

Except as specified above or prohibited by applicable law: all express or implied conditions and warranties, including, without limitation, any implied warranty or condition of merchantability or fitness for a particular purpose, or accuracy of any informational content, are hereby excluded and disclaimed by SureFire, and in no event will SureFire be liable for any special, direct, indirect, consequential, incidental or punitive damages howsoever arising and regardless of the theory of liability, even if advised of the possibility of such damages. Products, prices, availability, specifications, and offers are subject to change or cancellation at any time without notice.

WARRANTY CLAIMS

For repair or replacement contact Customer Service at 714-545-9444 and obtain a Return Merchandise Authorization number (RMA#).

Then package the unit carefully and return (no CODs please) to:

SureFire, LLC.
Repairs Department, RMA# _____
17680 Newhope Street, Suite B
Fountain Valley, CA 92708

SureFire will pay any reasonable shipping costs to return the unit to you.

SUREFIRE®

18300 MT. BALDY CIRCLE
FOUNTAIN VALLEY, CA 92708-6122
WWW.SUREFIRE.COM

Revision A 04-2019
71-01-1094
RSP-XX



USER MANUAL

REMOTE SWITCH FOR PISTOLS

MOMENTARY & CONSTANT ON OPERATION

⚠ WARNING

ALWAYS confirm weapon is unloaded and on SAFE before attempting installation.

For momentary-on light operation: press and hold either the right or left side of tailcap toggle switch (A) or apply pressure to the RSP (B); release to turn light off.

For constant-on operation, rotate tailcap toggle switch up or down (C); rotate in the opposite direction to turn light off.

REMOTE SWITCH INSTALLATION

1. Use a 5/64" hex wrench to remove plate cover. Store for future use.
2. Align remote pistol switch pin contacts with contact pads and screw holes on top of the weaponlight body.
3. Replace socket head screws into holes and screw into body using a 5/64" hex wrench.

⚠ CAUTION

DO NOT OVERTIGHTEN. DO NOT BEND RSP FRAME.

MAINTENANCE

Use a clean, dry cloth to wipe off body and window.

For additional tips on maintaining your SureFire illumination tool, visit www.surefire.com/faqs-maintenance.

ACCESSORIES

SureFire makes a full line of accessories for most of its illumination tools. For a complete listing, visit www.surefire.com/partsaccessories.

